

# Hong Kong Wetland Park

## School Education Programme Park Experience 1: Venturing into the Wetland Museum (Secondary Level)



### 1. Target

S1 – S6 Students (participant number: 15-50)

### 2. Objectives



- Understand the differences of climate and environment between Frozen North, Tropical Swamp and Hong Kong Wetlands
- Observe how wetland species adapt to different environment
- Know the importance of maintaining biodiversity
- Learn the concept of sustainable development



- Define what are wetlands and the functions of wetlands
- Differentiate the climate and environmental condition of different wetlands around the world
- Observe and analyze species adaptations
- Discuss about the environmental issues in wetlands



- Relationship between species adaptation, habitats and climates
- Importance of a stable climate and habitat
- Achieve green lifestyle

### 3. Rundown\*

Itinerary
Gallery: What are wetlands?
Gallery: Living Wetlands
Wetland Reserve: Pui Pui's Home
Wetland Reserve: Stream Walk
Wetland Reserve: Life Zone

\*Notes: Tours are subjected to changes under inclement weather.

## 4. Activity Contents

Contents	Main points
<b>Introduction</b> (Duration: 20 minutes) <ul style="list-style-type: none"> <li>PowerPoint Presentation</li> </ul>	<ul style="list-style-type: none"> <li>Definition of wetlands</li> <li>Background information about Hong Kong Wetland Park</li> </ul>
<b>Indoor Gallery</b> (Duration: 40 minutes) <b>Gallery: What are wetlands?</b> <b>Gallery: Living Wetlands</b> <ul style="list-style-type: none"> <li>Observation</li> <li>Guided tour</li> </ul>	<ul style="list-style-type: none"> <li>Functions and importance of wetlands</li> <li>Biodiversity</li> <li>Caring of endangered species</li> <li>Relationship between species adaptation, climate and environment</li> </ul>
<b>Field Trip</b> (Duration: 50 minutes) <b>Wetland Reserve: Pui Pui's Home</b> <b>Wetland Reserve: Stream Walk</b> <b>Wetland Reserve: Life Zone</b> <ul style="list-style-type: none"> <li>Observation</li> <li>Guided tour</li> </ul>	<ul style="list-style-type: none"> <li>Impact of invasive alien species</li> <li>Wetland habitats in Hong Kong</li> <li>Common wetland organisms and their adaptations</li> <li>Explore the mutual relationship between living organisms (Food chain/net)</li> </ul>
<b>Conclusion</b> (Duration: 10 minutes) <ul style="list-style-type: none"> <li>Summary</li> </ul>	<ul style="list-style-type: none"> <li>Review the animals observed in the Park</li> <li>Wetland biodiversity is supported by diverse forms of wetlands</li> <li>How to protect wetlands</li> </ul>



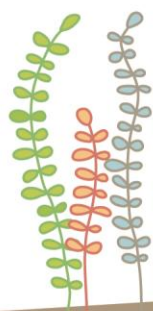
Field Trip



Indoor gallery

## 5. Relevant Curriculum

Level	Science	Geography	
<b>Secondary 1-3</b>	Unit 2: Water 2.3 Water purification 2.5 water conservation and pollution  Unit 3: Looking at Living Things 3.1 Living things 3.3 Biodiversity	Section A: From Hong Kong to the world — variations in space, people and places <ul style="list-style-type: none"> <li>• Using urban space wisely</li> </ul> Section C: Challenges for our world — Managing global issues in a sustainable way	
Level	Biology	Combined Science (Biology)	Physics
<b>Secondary 4-6</b>	III. Organisms and Environment f. Ecosystems  VI. Applied Ecology a. Human impact on the environment b. Pollution control c. Conservation d. Global issues	III. Organisms and Environment f. Ecosystems	VIII. Energy and Use of Energy b. Energy efficiency in building and transportation c. Renewable and non-renewable energy sources
	<b>Geography</b>	<b>Citizenship and Social Development</b>	
	Module 4: Building a Sustainable City	Module: Interconnectedness and interdependence of the contemporary world Theme: Sustainable development	



(updated on 2023.07)

